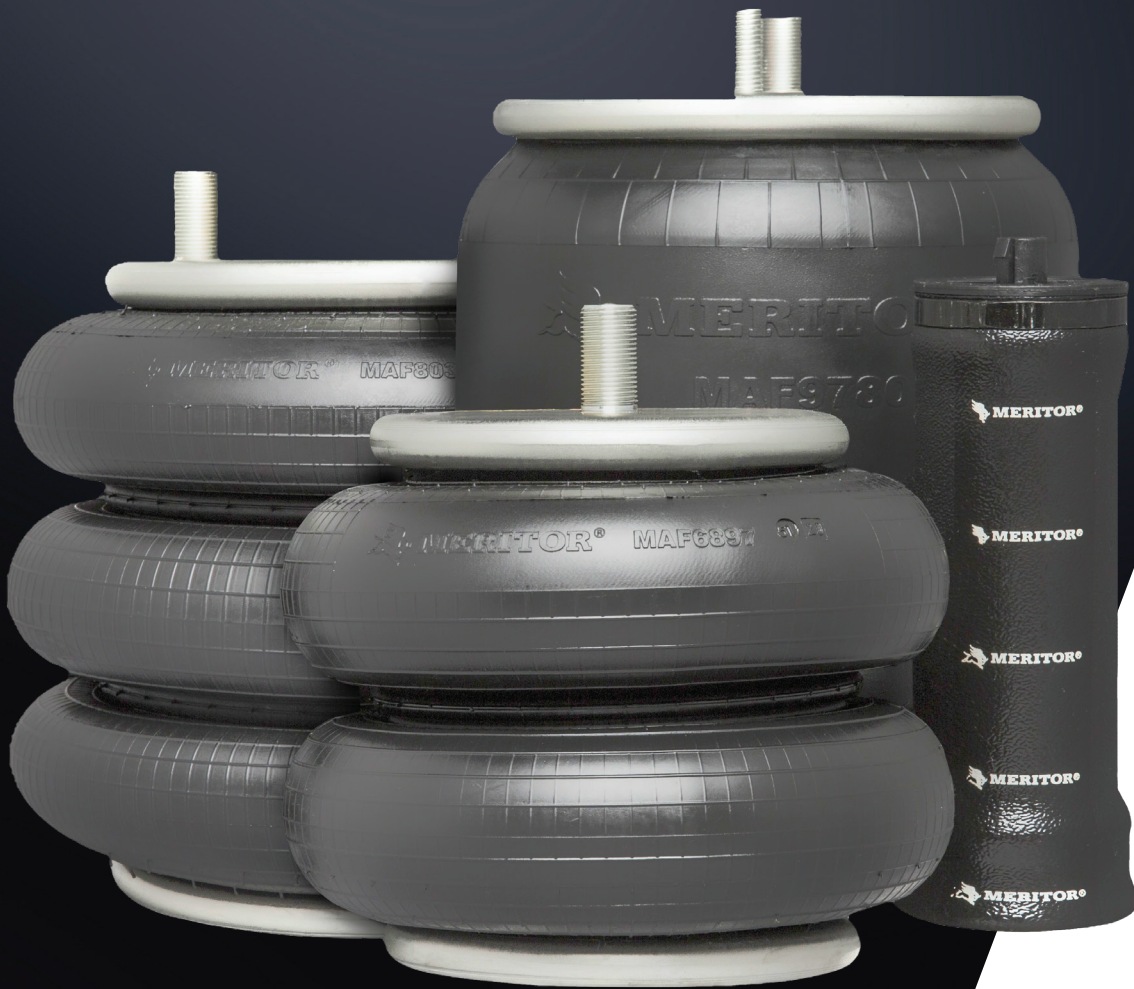


THE RIDE YOU CAN COUNT ON.

MERITOR MAF AIR SPRINGS



Meritor

**FOR
A WORLD
THAT'S
ALWAYS ON™**

CHOOSE THE RIGHT AIR SPRINGS FOR EXCEPTIONAL ROAD HANDLING AND DRIVER COMFORT.

Replacement Air Springs for Quality and Performance You Can Trust.

Air springs play an important role in protecting the tractor and trailer from jarring road shocks which can lead to equipment wear and tear, as well as downtime and maintenance costs. They are also key to a quality, comfortable ride. When it comes time for replacement, trust Meritor® air springs. Reliable quality and performance are the hallmarks of these aftermarket air springs while affordable prices make them an even more compelling solution. Our complete line of aftermarket air springs covers a wide variety of OEM specifications, providing the right product for your needs.

A Ride You Can Count On.

Designed and engineered for high efficiency, Meritor aftermarket air springs minimise vibrations reducing downtime and maintenance, as well as potential damage to ancillary components. Less vibration also translates to more control for the driver, and a smoother more comfortable ride. Plus, cargo stays protected. For more productivity and an improved ride, count on Meritor aftermarket air springs.

Air Springs Advantages

Exceptional Corrosion Resistance

- Trivalent chromium coating on bead plate provides rust protection against chemicals and harsh environmental factors
- Corrosion-resistant bead plate components for extended service life
- Electrostatic powder-coated steel and aluminum pistons for excellent oxidation resistance*

Robust Components

- Meritor® aftermarket piston studs with support washers provide added strength and stability
- Bead plate fittings with high torque and welding pull-off resistance

Superior Air Spring Durability

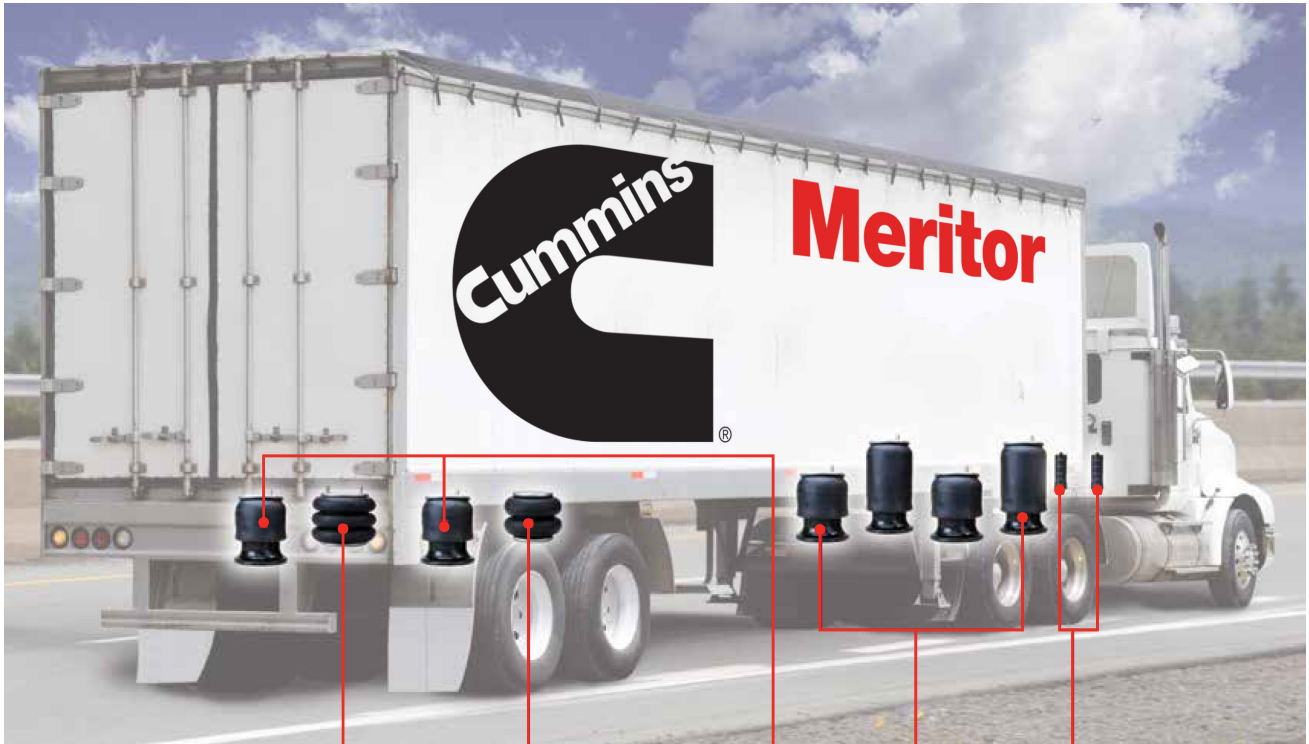
- Proven rubber and chord quality designed to withstand the OEM-intended duty cycles and beyond
- Lightweight, high-strength pistons help enhance performance

Comprehensive Portfolio

- Wide-ranging market coverage for commercial vehicle applications
- 1 year/100,000km unlimited warranty



*Applicable on 97% of offering



Triple convoluted
 Ideal for lift axles to accommodate higher load carrying capacities with improved road handling and ride quality.



Double convoluted
 Primarily for drive axles and suspensions, these air springs offer improved ride quality and cargo protection



Reversible (Rolling Lobe)
 Deliver a cushioned ride for less bounce than steel springs offering a smoother ride for the driver. Plus more protection from shocks and vibrations for the cargo.



Cab Mount
 Provide a cushion of air to the truck cab to isolate vibrations and noise ensuring an optimal working environment for the driver.

Air Springs Cross Reference

Meritor AFTMKT Part Number	Meritor Part Number (Genuine Firestone)	Firestone® Part Number	Automann® Part Number	Goodyear®/STEMCO® Part Number	ContiTech® Part Number	Triangle® Part Number	Air Spring Type
MAF9978	FS9978	W013589978	ABHS289-29	-	9 10-14 P 959	-	Reversible Sleeve
MAF9974	FS9974	W013589974	AB1DK23P-9974	1R121048	9 10-17.5 A 930	8930	
MAF9935	FS9935	W013589935	AB1DK23P-9935	1R12532	9 10-17.5 P 548	8548	
MAF9921	FS9921	W013589921	AB1DK23P-9921	1R12502	9 10-17.5 P 443	8443	
MAF9807	FS9807	W013589807	AB1DK23I-9807	1R121047	9 10-13.5 P 874	8874	
MAF9781	FS9781	W013589781	AB1DK23K-9781	1R12603	9 10S-16 A 382	8382	
MAF9780	FS9780	W013589780	AB1DK23K-9780	1R12186	9 10S-16 P 382	8382	
MAF9663	FS9663	W013589663	AB1DK23P-9663	-	9 10-18.5 P 939 (BK)	8939	
MAF9648	FS9648	W013589648	AB1DK23K-9648	1R12398	9 10S-16 P 1068 (BK)	8456	
MAF9645	FS9645	W013589645	AB1DK20K-9645	-	9 10BP-22 P 739	8565	
MAF9644	FS9644	W013589644	AB1DK23J-9644	-	9 10BP-16 P 569	8569	
MAF9640	FS9640	W013589640	AB1DK23H-9640	1R12367	9 10-18.5 P 939 (BK)	8427	
MAF9626	FS9626	W013589626	-	-	9 10S-16 P 1068 (BK)	-	
MAF9625	FS9625	W013589625	AB1DK20G-9617	1R11222	9 9-10 P 538 (BK)	-	
MAF9622	FS9622	W013589622	AB1DK20G-9622	1R11221	9 9-9 P 537 (BK)	8537	
MAF9616	FS9616	W013589616	AB1DK20D-9616	1R11242	9 9-12 P 515	8515	
MAF9580	FS9580	W013589580	AB1DK25C-9580	1R13118	10 10-21 P 434	8434	
MAF9547	FS9547	W013589547	AB1DK20G-9547	1R11268	9 9-9 P 859 (BK)	8859	
MAF9541AU	FS9541	W013589541	AB1DK20H-9541	1R11268	9 9-10 P 861 (BK)	8861	
MAF9471	FS9471	W013589471	AB1DK23P-9471	1R12372	9 10-17.5 P 502	8502	
MAF9448	FS9448	W013589448	-	1R11150	9 9-12 P 563	-	
MAF9422	FS9422	W013589422	AB1DK20D-9422	1R11028	9 9-12 P 314	8314	
MAF9394	FS9394	W013589394	AB1 DK23L-9394	1R12142	9 10-19 P 383	8358	
MAF9375	FS9375	W013589375	AB1DK23P-9375	1R12404	9 10-18.5 P 451 (BK)	-	
MAF9373	FS9373	W013589373	AB1DK23P-9373	1R12403	9 10-18.5 P 519 (BK)	8519	
MAF9371	FS9371	W013589371	AB1DK23P-9371	1R12199	9 10-18.5 P 521 (BK)	8521	
MAF9370	FS9370	W013589370	AB1DK23N-9370	1R12440	9 10-21 P 448	8448	
MAF9367	FS9367	W013589367	AB1DK23N-9367	1R12256	9 10-21 A 505	8505	
MAF9366	FS9366	W013589366	AB1DK23H-9366	1R12487	9 10-12 P 488	8488	
MAF9321	FS9321	W013589321	AB1DK23N-9321	1R12256	9 10-21 A 361	8361	
MAF9307	FS9307	W013589307	AB1DK23F-9307	1R12095	9 10-10 P 471	8471	
MAF9297	FS9297	W013589297	AB1DK23P-9297	1R12402	9 10-18.5 P 520	8520	
MAF9293	FS9293	W013589293	AB1DK20F-9293	1R10120	9 9K-15 P 424	8424	
MAF9270	FS9270	W013589270	AB1DK23L-9270	1R12225	9 10-13.5 S 433	8433	
MAF9265	FS9265	W013589265	AB1DK23L-9265	1R12375	9 10-19 P 435	8435	
MAF9223	FS9223	W013589223	AB1DK23K-9223	1R12188	9 10-16 P 409	8409	
MAF9192	FS9192	W013589192	AB1DK23L-9192	1R12167	9 10-19 P 326	8326	
MAF9144	FS9144	W013589144	AB1DK23G-9144	1R13047	11 10.5-17 A 377	8377	
MAF9122	FS9122	W013589122	AB1D28C-9122	1R13038	11 10.5-21 A 313	8313	
MAF9121	FS9121	W013589121	AB1D28G-9121	1R11918	11 10.5-17 A 317	8317	
MAF9105	FS9105	W013589105	AB1DK23H-9105	1R12132	9 10-12 P 319	8319	
MAF9101	FS9101	W013589101	AB1DK23L-9101	1R12076	9 10-19 P 315	8315	
MAF9082	FS9082	W013589082	AB1DK23K-9082	1R11917	9 10-16 P 310	8310	
MAF9069	FS9069	W013589069	AB1DK23L-9069	1R12069	9 10-14 P 312	8312	
MAF9039	FS9039	W013589039	AB1DK23F-9039	1R12095	9 10-10 P 311	8311	
MAF9026	FS9026	W013589026	AB1DK23K-9026	1R12567	9 10-16 P 393	8393	
MAF8944	FS8944	W013588944	AB1DK23P-8944	1R12366	9 10-17.5 P 436	8436	
MAF8864	FS8864	W013588864	AB1DK23L-8864	-	9 10-19 P 898	8898	
MAF8855	FS8855	W013588855	AB17DK23L-8855	1R12613	9 10-19 P 552	8552	

Air Springs Cross Reference

Meritor AFTMKT Part Number	Meritor Part Number (Genuine Firestone)	Firestone® Part Number	Automann® Part Number	Goodyear®/STEMCO® Part Number	ContiTech® Part Number	Triangle® Part Number	Air Spring Type
MAF8852	FS8852	W013588852	AB1DK23L-8852	1R12568	9 10-19 P 472	8472	Reversible Sleeve
MAF8829	FS8829	W013588829	AB21DK23K-8829	1R12405	9 10-16 P 449	8449	
MAF8813	FS8813	W013588813	AB28DK23I-8813	-	9 10-14 P 577	8577	
MAF8782	FS8782	W013588782	AB1DK25B-8782	1R13109	10 10-15 S 871	8871	
MAF8774	FS8774	W013588774	AB1DK28M-8774	1R14172	11 10.5F-17 P 745	8745	
MAF8755	FS8755	W013588755	AB1DK25B-8755	1R13124	10 10-15 S 522	8522	
MAF8740	FS8740	W013588740	AB1DK25B-8740	1R13210	10 10-15 S 773	8579	
MAF8729	FS8729	W013588729	AB1DK25D-8729	1R13130	10 10A-12 1330	8513	
MAF8713	FS8713	W013588713	AB1DK25E-8713	1R13176	10 10-16 S 533	8533	
MAF8709	FS8709	W013588709	AB1DK25A-8709	1R13159	10 10.5-15 P 460	8460	
MAF8708	FS8708	W013588708	AB1DK25E-8708	1R13128	10 10-16 S 526	8526	
MAF8204	FS8204	W013588204	AB1DK23H-8204	1R12508	9 10-12 P 484	8484	
MAF8091	FS8091	W013588091	AB1DK28E-8091	1R14171	11 10.5A-16 P 523	8523	
MAF8050	FS8050	W013588050	AB1DK28A-8050	1R14039	11 10.5C-16 A 320	8320	
MAF8042	FS8042	W013588042	-	3B12322	FT 330-29 790	-	
MAF8033	FS8033	W013588033	ABSP3B22R-8033	3B12312	FT 330-29 525	4525	
MAF8032	FS8032	W013588032	ABSP3B22R-8032	3B12315	FT 330-29 413	4413	
MAF8027	FS8027	W013588027	ABSP322R-8027	3B12310	FT 330-29 466	4466	
MAF8008	FS8008	W013588008	ABSP3B22R-8008	3B12300	FT 330-29 431	4431	
MAF7996	FS7996	W013587996	ABSP-12B22R-7996	3B12335	FT 330-29 520	4520	Double Convoluted
MAF7897	FS7897	W013587897	ABSP2B22R-7897	-	FD 200-22 524	4524	
MAF7808	FS7808	W013587808	ABSP3B32R-7808	3B14350	FT 530-32 336	4336	Triple Convoluted
MAF7797	FS7797	W013587797	-	-	FT 530-32 535	-	Double Convoluted
MAF7795	FS7795	W013587795	ABSP2B12R-7795	2B10226	FD 200-19 713	4524	
MAF7555	FS7555	W013587555	ABSP2B22R-7555	2B12440	FD 331-26 480	4480	
MAF7472	FS7472	W013587472	ABSP-2B22RA-7472	2B12434	FD 330-30 371	4371	
MAF7424	FS7424	W013587424	ABSP2B22R-7424	2B10300	FD 330-22 327	4327	
MAF7410	FS7410	W013587410	ABSP2B22R-7410	2B12406	FD 330-22 331	4331	
MAF7403	FS7403	W013587403	ABSP2B22R-7403	2B10307	FD 330-22 318	4318	
MAF7400	FS7400	W013587400	ABSP2B22R-7400	2B10309	FD 330-22 313	4313	
MAF7215	FS7215	W023587215	-	1S5175	SC31-Y215	-	CAB
MAF7206	FS7206	W023587206	-	1S5176	SC31-W206	-	
MAF7205	FS7205	W023587205	-	1S5175	SC31-Y205	-	
MAF7136	FS7136	W013587136	ABSP2B34R-7136	2B14356	FD 530-22 321	4321	Double Convoluted
MAF7135	FS7135	W013587135	ABSP2B34R-7135	2B14360	FD 530-22 311	4311	
MAF7036	FS7036	W023587036	-	1S5186	SC29-Y036	-	CAB
MAF6935	FS6935	W013586935	ABSP2B12R-6935	2B9201	FD 200-19 499	4499	Double Convoluted
MAF6927	FS6927	W013586927	-	2B09218	FD 200-25 453	-	
MAF6910	FS6910	W013586910	ABSP2B12R-6910	2B09200	FD 200-19 320	4320	
MAF6905	FS6905	W013586905	ABSP2B12R-6905	2B09206	FD 200-19 315	4315	
MAF6902	FS6902	W013586902	ABSP2B12R-6902	2B09201	FD 200-19 310	4310	
MAF6897	FS6897	W013586897	-	2B09229	FD 200-19 505	4706	
MAF6801	FS6801	W013586801	ABSP2B34B-6801	2B14365	FD 530-30 451	4451	Reversible Sleeve
MAF5423	FS5423	W013585423	-	-	6 6.5-13 S 559	-	
MAF1191	FS1191	W013581191	AB1DK23R-1731	1R12432	9 10S-18 P 1067 (BK)	-	
MAF9466	FS9466	W013589466	-	1R12-365	910-16 P 410	-	
MAF9501	FS9501	W013589501	-	1R12-485	910-16 P 410	-	



Meritor Heavy Vehicle Systems Australia
50 Calarco Drive
Derrimut, VIC 3026
AUSTRALIA

(03) 8353 6050

meritorpartsonline.com

CMFL051-MAF AIR SPRINGS 06/23
Produced in AUS 06/23
©2023 Cummins Inc.